

# Merton Daily Dashboard

Reporting Period Ending: 9 April  
2019

Select BCU \ Borough  
Merton



## Offences & SDs

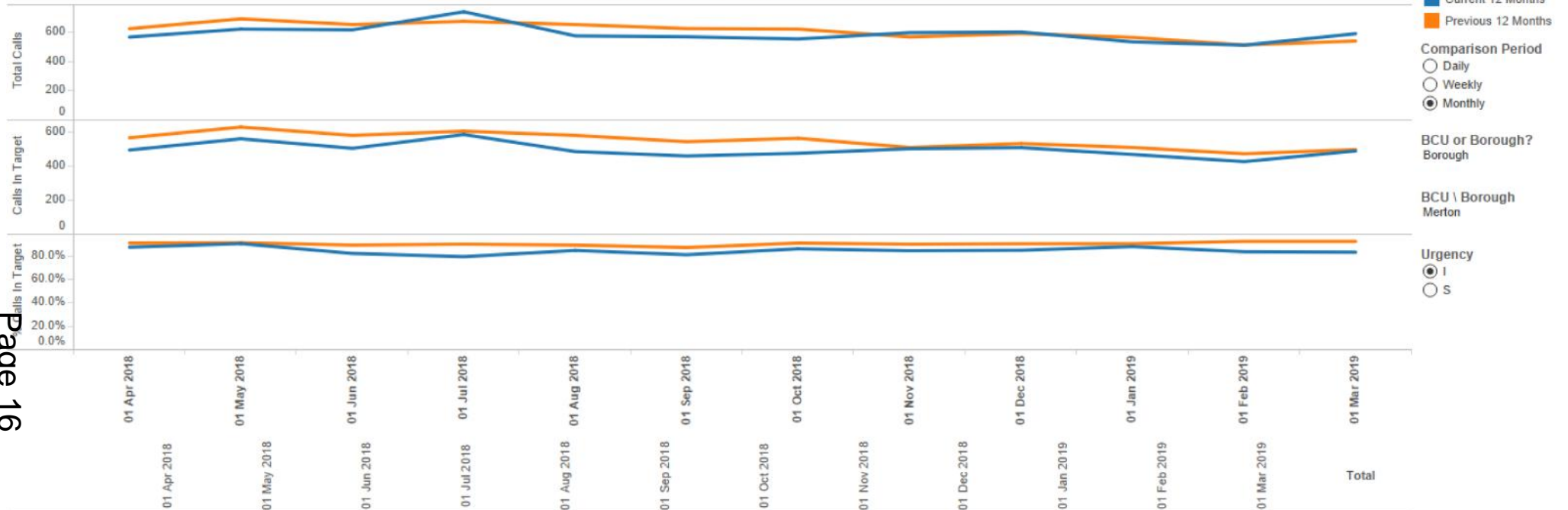
Crime Category	Sub Category	Offences Previous R12	Offences Current R12	Offences % Change	SDs Previous R12	SDs Current R12	SD Rate - Previous R12	SD Rate - Current R12	
TNO	TNO	13,788	14,078	2.1%	2,103	1,337	15.3%	9.5%	●
	<b>Total</b>	<b>13,788</b>	<b>14,078</b>	<b>2.1%</b>	<b>2,103</b>	<b>1,337</b>	<b>15.3%</b>	<b>9.5%</b>	●
Burglary	<b>Total</b>	<b>1,402</b>	<b>1,670</b>	<b>19.1%</b>	<b>72</b>	<b>91</b>	<b>5.1%</b>	<b>5.4%</b>	●
Robbery	Robbery of Business P..	40	41	2.5%	9	9	22.5%	22.0%	●
	Robbery of Personal Property	329	343	4.3%	20	18	6.1%	5.2%	●
	<b>Total</b>	<b>369</b>	<b>384</b>	<b>4.1%</b>	<b>29</b>	<b>27</b>	<b>7.9%</b>	<b>7.0%</b>	●
Robbery - Mobile Phone	<b>Total</b>	<b>84</b>	<b>92</b>	<b>9.5%</b>	<b>5</b>	<b>6</b>	<b>6.0%</b>	<b>6.5%</b>	●
Theft Person - Mobile Phone	<b>Total</b>	<b>93</b>	<b>107</b>	<b>15.1%</b>	<b>1</b>	<b>1</b>	<b>1.1%</b>	<b>0.9%</b>	●
VWI	VWI - Domestic Abuse	474	520	9.7%	135	106	28.5%	20.4%	●
	VWI - Non Domestic A..	918	872	-5.0%	190	103	20.7%	11.8%	●
	<b>Total</b>	<b>1,392</b>	<b>1,392</b>	<b>0.0%</b>	<b>325</b>	<b>209</b>	<b>23.3%</b>	<b>15.0%</b>	●
Domestic Abuse	<b>Total</b>	<b>1,527</b>	<b>1,831</b>	<b>19.9%</b>	<b>371</b>	<b>314</b>	<b>24.3%</b>	<b>17.1%</b>	●
Sexual Offences	Rape	132	115	-12.9%	13	6	9.8%	5.2%	●
	Other Sexual Offences	246	235	-4.5%	26	22	10.6%	9.4%	●
	<b>Total</b>	<b>378</b>	<b>350</b>	<b>-7.4%</b>	<b>39</b>	<b>28</b>	<b>10.3%</b>	<b>8.0%</b>	●
Total Gun Crime	<b>Total</b>	<b>41</b>	<b>33</b>	<b>-19.5%</b>	<b>4</b>	<b>5</b>	<b>9.8%</b>	<b>15.2%</b>	●
Lethal-barrelled Gun Discharges	<b>Total</b>	<b>6</b>	<b>6</b>	<b>0.0%</b>	<b>2</b>	<b>-</b>	<b>33.3%</b>	<b>-</b>	●
Total Knife Crime	<b>Total</b>	<b>185</b>	<b>221</b>	<b>19.5%</b>	<b>31</b>	<b>30</b>	<b>16.8%</b>	<b>13.6%</b>	●
Knife Injury Victims (U25 Non DA)	<b>Total</b>	<b>17</b>	<b>18</b>	<b>5.9%</b>	<b>-</b>	<b>-</b>	<b>-</b>	<b>-</b>	●
Theft	Other Theft & Handling	1,482	1,596	7.7%	57	35	3.8%	2.2%	●
	Bicycle Theft	467	345	-26.1%	16	5	3.4%	1.4%	●
	Shoplifting	1,080	893	-17.3%	265	131	24.5%	14.7%	●
	Theft from Person	230	249	8.3%	1	2	0.4%	0.8%	●
	<b>Total</b>	<b>3,259</b>	<b>3,083</b>	<b>-5.4%</b>	<b>339</b>	<b>173</b>	<b>10.4%</b>	<b>5.6%</b>	●

## I & S Calls and ASB

	Previous R12	Current R12	Change %
ASB Calls	3,875	4,010	3.5%
ASB Repeat Callers	74	82	10.8%
I Calls In Target	90.5%	84.4%	
S Calls In Target	84.5%	71.7%	

# Merton I Calls YTD

Monthly I Calls and I Calls In Target



Page 16

	01 Apr 2018	01 May 2018	01 Jun 2018	01 Jul 2018	01 Aug 2018	01 Sep 2018	01 Oct 2018	01 Nov 2018	01 Dec 2018	01 Jan 2019	01 Feb 2019	01 Mar 2019	Total
Total Calls Previous Year	622	689	650	672	650	623	619	566	589	563	511	538	7,292
Total Calls Current Year	565	619	614	737	573	567	552	595	599	532	510	588	7,051
Calls In Target Previous Year	567	630	581	606	581	544	564	510	533	510	473	498	6,597
Calls In Target Current Year	495	561	505	586	486	460	476	503	509	469	427	490	5,967
% Calls In Target Previous Year	91.2%	91.4%	89.4%	90.2%	89.4%	87.3%	91.1%	90.1%	90.5%	90.6%	92.6%	92.6%	90.5%
% Calls In Target Current Year	87.6%	90.6%	82.2%	79.5%	84.8%	81.1%	86.2%	84.5%	85.0%	88.2%	83.7%	83.3%	84.6%
% Difference	-3.5%	-0.8%	-7.1%	-10.7%	-4.6%	-6.2%	-4.9%	-5.6%	-5.5%	-2.4%	-8.8%	-9.2%	-5.8%

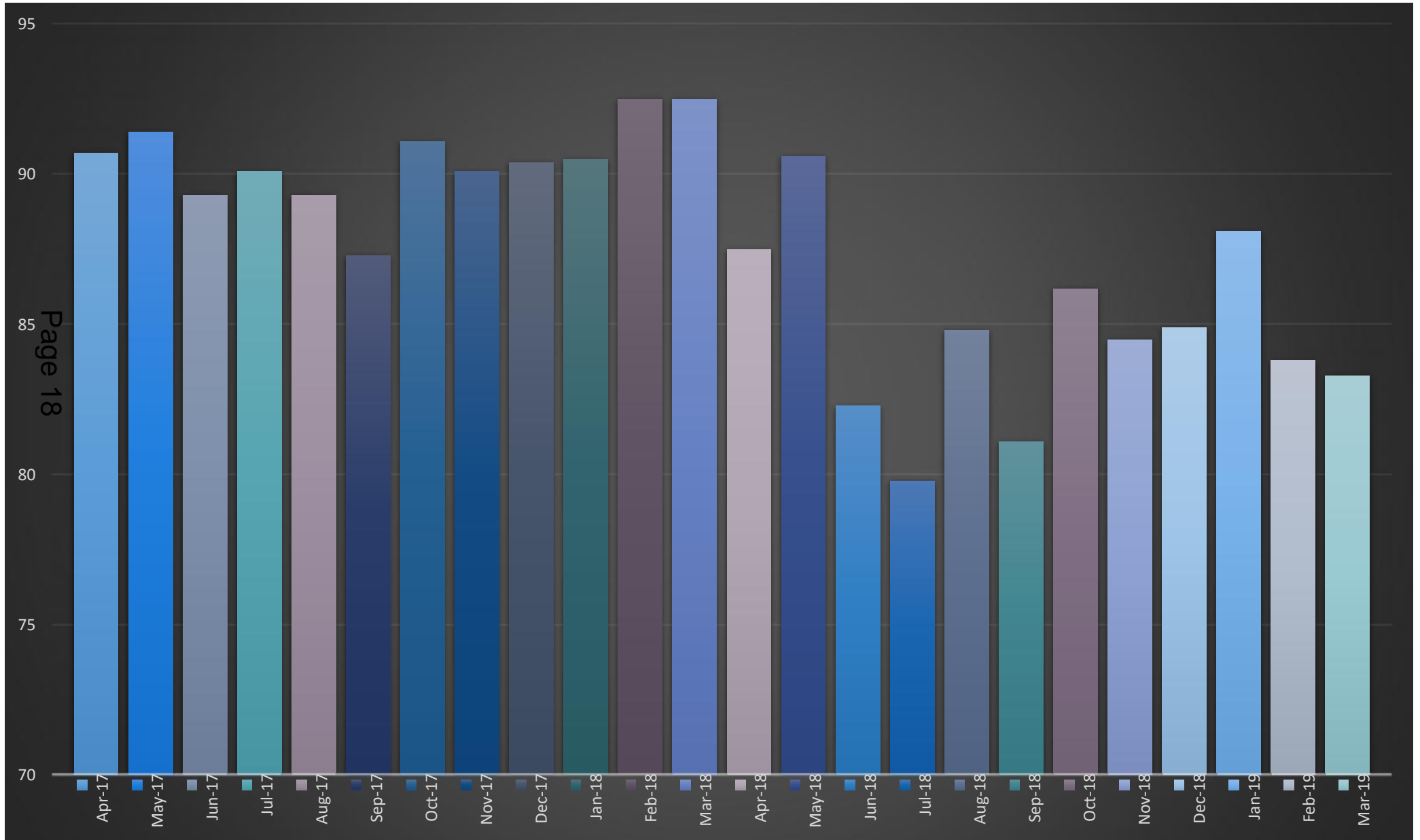
[Click here for 52-weeks \ FYTD view](#)



An I call, or Immediate Call, is an emergency response by a police unit that aims to attend within 15 minutes of the call being received.

The following slide shows the average response times each month in Merton Borough during the period of April 2017 to March 2019.

# Average Response Times Apr'17-Mar'19



# Kingston upon Thames Daily Dashboard

Reporting Period Ending: 9 April  
2019

Select BCU \ Borough  
Kingston upon Thames



## Offences & SDs

Crime Category	Sub Category	Offences Previous R12	Offences Current R12	Offences % Change	SDs Previous R12	SDs Current R12	SD Rate - Previous R12	SD Rate - Current R12	
TNO	TNO	11,624	12,768	9.8%	1,764	1,119	15.2%	8.8%	●
	<b>Total</b>	<b>11,624</b>	<b>12,768</b>	<b>9.8%</b>	<b>1,764</b>	<b>1,119</b>	<b>15.2%</b>	<b>8.8%</b>	●
Burglary	<b>Total</b>	<b>1,000</b>	<b>1,038</b>	<b>3.8%</b>	<b>56</b>	<b>31</b>	<b>5.6%</b>	<b>3.0%</b>	●
Robbery	Robbery of Business P..	20	31	55.0%	6	5	30.0%	16.1%	●
	Robbery of Personal Property	181	268	48.1%	9	11	5.0%	4.1%	●
	<b>Total</b>	<b>201</b>	<b>299</b>	<b>48.8%</b>	<b>15</b>	<b>16</b>	<b>7.5%</b>	<b>5.4%</b>	●
Robbery - Mobile Phone	<b>Total</b>	<b>43</b>	<b>85</b>	<b>97.7%</b>	<b>2</b>	<b>5</b>	<b>4.7%</b>	<b>5.9%</b>	●
Theft Person - Mobile Phone	<b>Total</b>	<b>131</b>	<b>217</b>	<b>65.6%</b>	<b>-</b>	<b>1</b>	<b>-</b>	<b>0.5%</b>	●
VWI	VWI - Domestic Abuse	310	364	17.4%	108	78	34.8%	21.4%	●
	VWI - Non Domestic A..	849	916	7.9%	188	100	22.1%	10.9%	●
	<b>Total</b>	<b>1,159</b>	<b>1,280</b>	<b>10.4%</b>	<b>296</b>	<b>178</b>	<b>25.5%</b>	<b>13.9%</b>	●
Domestic Abuse	<b>Total</b>	<b>1,112</b>	<b>1,460</b>	<b>31.3%</b>	<b>303</b>	<b>267</b>	<b>27.2%</b>	<b>18.3%</b>	●
Sexual Offences	Rape	125	156	24.8%	7	1	5.6%	0.6%	●
	Other Sexual Offences	196	247	26.0%	29	27	14.8%	10.9%	●
	<b>Total</b>	<b>321</b>	<b>403</b>	<b>25.5%</b>	<b>36</b>	<b>28</b>	<b>11.2%</b>	<b>6.9%</b>	●
Total Gun Crime	<b>Total</b>	<b>22</b>	<b>27</b>	<b>22.7%</b>	<b>8</b>	<b>4</b>	<b>36.4%</b>	<b>14.8%</b>	●
Lethal-barrelled Gun Discharges	<b>Total</b>	<b>2</b>	<b>2</b>	<b>0.0%</b>	<b>2</b>	<b>1</b>	<b>100.0%</b>	<b>50.0%</b>	●
Total Knife Crime	<b>Total</b>	<b>94</b>	<b>158</b>	<b>68.1%</b>	<b>23</b>	<b>13</b>	<b>24.5%</b>	<b>8.2%</b>	●
Knife Injury Victims (U25 Non DA)	<b>Total</b>	<b>21</b>	<b>19</b>	<b>-9.5%</b>	<b>-</b>	<b>-</b>	<b>-</b>	<b>-</b>	●
Theft	Other Theft & Handling	1,361	1,489	9.4%	38	22	2.8%	1.5%	●
	Bicycle Theft	390	722	85.1%	4	2	1.0%	0.3%	●
	Shoplifting	1,120	938	-16.3%	260	152	23.2%	16.2%	●
	Theft from Person	343	506	47.5%	4	1	1.2%	0.2%	●
	<b>Total</b>	<b>3,214</b>	<b>3,655</b>	<b>13.7%</b>	<b>306</b>	<b>177</b>	<b>9.5%</b>	<b>4.8%</b>	●

## I & S Calls and ASB

	Previous R12	Current R12	Change %
ASB Calls	3,371	3,512	4.2%
ASB Repeat Callers	84	74	-11.9%
I Calls In Target	89.5%	74.8%	
S Calls In Target	85.0%	70.5%	

# Richmond upon Thames Daily Dashboard

Reporting Period Ending: 9 April  
2019

Select BCU \ Borough  
Richmond upon Thames



## Offences & SDs

Crime Category	Sub Category	Offences Previous R12	Offences Current R12	Offences % Change	SDs Previous R12	SDs Current R12	SD Rate - Previous R12	SD Rate - Current R12	
TNO	TNO	13,225	12,978	-1.9%	1,374	837	10.4%	6.4%	●
	<b>Total</b>	<b>13,225</b>	<b>12,978</b>	<b>-1.9%</b>	<b>1,374</b>	<b>837</b>	<b>10.4%</b>	<b>6.4%</b>	●
Burglary	<b>Total</b>	<b>1,834</b>	<b>1,803</b>	<b>-1.7%</b>	<b>65</b>	<b>63</b>	<b>3.5%</b>	<b>3.5%</b>	●
Robbery	Robbery of Business P..	15	15	0.0%	4	4	26.7%	26.7%	●
	Robbery of Personal Property	227	406	78.9%	15	11	6.6%	2.7%	●
	<b>Total</b>	<b>242</b>	<b>421</b>	<b>74.0%</b>	<b>19</b>	<b>15</b>	<b>7.9%</b>	<b>3.6%</b>	●
Robbery - Mobile Phone	<b>Total</b>	<b>54</b>	<b>138</b>	<b>155.6%</b>	<b>6</b>	<b>1</b>	<b>11.1%</b>	<b>0.7%</b>	●
Theft Person - Mobile Phone	<b>Total</b>	<b>89</b>	<b>76</b>	<b>-14.6%</b>	<b>-</b>	<b>-</b>	<b>-</b>	<b>-</b>	●
VWI	VWI - Domestic Abuse	378	342	-9.5%	101	78	26.7%	22.8%	●
	VWI - Non Domestic A..	654	666	1.8%	102	74	15.6%	11.1%	●
	<b>Total</b>	<b>1,032</b>	<b>1,008</b>	<b>-2.3%</b>	<b>203</b>	<b>152</b>	<b>19.7%</b>	<b>15.1%</b>	●
Domestic Abuse	<b>Total</b>	<b>1,241</b>	<b>1,220</b>	<b>-1.7%</b>	<b>311</b>	<b>232</b>	<b>25.1%</b>	<b>19.0%</b>	●
Sexual Offences	Rape	115	92	-20.0%	6	3	5.2%	3.3%	●
	Other Sexual Offences	214	204	-4.7%	25	8	11.7%	3.9%	●
	<b>Total</b>	<b>329</b>	<b>296</b>	<b>-10.0%</b>	<b>31</b>	<b>11</b>	<b>9.4%</b>	<b>3.7%</b>	●
Total Gun Crime	<b>Total</b>	<b>22</b>	<b>19</b>	<b>-13.6%</b>	<b>3</b>	<b>4</b>	<b>13.6%</b>	<b>21.1%</b>	●
Lethal-barrelled Gun Discharges	<b>Total</b>	<b>3</b>	<b>2</b>	<b>-33.3%</b>	<b>-</b>	<b>-</b>	<b>-</b>	<b>-</b>	●
Total Knife Crime	<b>Total</b>	<b>128</b>	<b>166</b>	<b>29.7%</b>	<b>25</b>	<b>12</b>	<b>19.5%</b>	<b>7.2%</b>	●
Knife Injury Victims (U25 Non DA)	<b>Total</b>	<b>16</b>	<b>19</b>	<b>18.8%</b>	<b>-</b>	<b>-</b>	<b>-</b>	<b>-</b>	●
Theft	Other Theft & Handling	1,385	1,326	-4.3%	41	31	3.0%	2.3%	●
	Bicycle Theft	950	866	-8.8%	13	5	1.4%	0.6%	●
	Shoplifting	603	571	-5.3%	90	80	14.9%	14.0%	●
	Theft from Person	253	231	-8.7%	-	2	-	0.9%	●
	<b>Total</b>	<b>3,191</b>	<b>2,994</b>	<b>-6.2%</b>	<b>144</b>	<b>118</b>	<b>4.5%</b>	<b>3.9%</b>	●

## I & S Calls and ASB

	Previous R12	Current R12	Change %
ASB Calls	3,616	3,486	-3.6%
ASB Repeat Callers	65	53	-18.5%
I Calls In Target	87.3%	77.9%	
S Calls In Target	83.0%	69.5%	

# Wandsworth Daily Dashboard

Reporting Period Ending: 9 April  
2019

Select BCU \ Borough  
Wandsworth



## Offences & SDs

Crime Category	Sub Category	Offences Previous R12	Offences Current R12	Offences % Change	SDs Previous R12	SDs Current R12	SD Rate - Previous R12	SD Rate - Current R12	
TNO	TNO	25,855	25,927	0.3%	2,956	2,197	11.4%	8.5%	●
	<b>Total</b>	<b>25,855</b>	<b>25,927</b>	<b>0.3%</b>	<b>2,956</b>	<b>2,197</b>	<b>11.4%</b>	<b>8.5%</b>	●
Burglary	<b>Total</b>	<b>2,557</b>	<b>2,769</b>	<b>8.3%</b>	<b>120</b>	<b>111</b>	<b>4.7%</b>	<b>4.0%</b>	●
Robbery	Robbery of Business P..	52	80	53.8%	10	28	19.2%	35.0%	●
	Robbery of Personal Property	782	753	-3.7%	40	37	5.1%	4.9%	●
	<b>Total</b>	<b>834</b>	<b>833</b>	<b>-0.1%</b>	<b>50</b>	<b>65</b>	<b>6.0%</b>	<b>7.8%</b>	●
Robbery - Mobile Phone	<b>Total</b>	<b>181</b>	<b>185</b>	<b>2.2%</b>	<b>10</b>	<b>10</b>	<b>5.5%</b>	<b>5.4%</b>	●
Theft Person - Mobile Phone	<b>Total</b>	<b>345</b>	<b>317</b>	<b>-8.1%</b>	<b>-</b>	<b>2</b>	<b>-</b>	<b>0.6%</b>	●
VWI	VWI - Domestic Abuse	755	690	-8.6%	208	157	27.5%	22.8%	●
	VWI - Non Domestic A..	1,573	1,739	10.6%	243	207	15.4%	11.9%	●
	<b>Total</b>	<b>2,328</b>	<b>2,429</b>	<b>4.3%</b>	<b>451</b>	<b>364</b>	<b>19.4%</b>	<b>15.0%</b>	●
Domestic Abuse	<b>Total</b>	<b>2,426</b>	<b>2,573</b>	<b>6.1%</b>	<b>587</b>	<b>505</b>	<b>24.2%</b>	<b>19.6%</b>	●
Sexual Offences	Rape	252	245	-2.8%	23	2	9.1%	0.8%	●
	Other Sexual Offences	451	463	2.7%	51	44	11.3%	9.5%	●
	<b>Total</b>	<b>703</b>	<b>708</b>	<b>0.7%</b>	<b>74</b>	<b>46</b>	<b>10.5%</b>	<b>6.5%</b>	●
Total Gun Crime	<b>Total</b>	<b>69</b>	<b>69</b>	<b>0.0%</b>	<b>13</b>	<b>33</b>	<b>18.8%</b>	<b>47.8%</b>	●
Lethal-barrelled Gun Discharges	<b>Total</b>	<b>3</b>	<b>8</b>	<b>166.7%</b>	<b>1</b>	<b>1</b>	<b>33.3%</b>	<b>12.5%</b>	●
Total Knife Crime	<b>Total</b>	<b>403</b>	<b>420</b>	<b>4.2%</b>	<b>72</b>	<b>58</b>	<b>17.9%</b>	<b>13.8%</b>	●
Knife Injury Victims (U25 Non DA)	<b>Total</b>	<b>52</b>	<b>51</b>	<b>-1.9%</b>	<b>-</b>	<b>-</b>	<b>-</b>	<b>-</b>	●
Theft	Other Theft & Handling	3,254	3,325	2.2%	106	41	3.3%	1.2%	●
	Bicycle Theft	1,205	1,049	-12.9%	17	11	1.4%	1.0%	●
	Shoplifting	1,446	1,273	-12.0%	234	130	16.2%	10.2%	●
	Theft from Person	743	732	-1.5%	5	5	0.7%	0.7%	●
	<b>Total</b>	<b>6,648</b>	<b>6,379</b>	<b>-4.0%</b>	<b>362</b>	<b>187</b>	<b>5.4%</b>	<b>2.9%</b>	●

## I & S Calls and ASB

	Previous R12	Current R12	Change %
ASB Calls	6,659	6,990	5.0%
ASB Repeat Callers	142	144	1.4%
I Calls In Target	87.5%	85.2%	
S Calls In Target	76.5%	71.1%	

# South West BCU Daily Dashboard

Reporting Period Ending: 9 April  
2019

Select BCU \ Borough  
South West BCU



## Offences & SDs

Crime Category	Sub Category	Offences Previous R12	Offences Current R12	Offences % Change	SDs Previous R12	SDs Current R12	SD Rate - Previous R12	SD Rate - Current R12	
TNO	TNO	64,492	65,751	2.0%	8,197	5,490	12.7%	8.3%	●
	<b>Total</b>	<b>64,492</b>	<b>65,751</b>	<b>2.0%</b>	<b>8,197</b>	<b>5,490</b>	<b>12.7%</b>	<b>8.3%</b>	●
Burglary	<b>Total</b>	<b>6,793</b>	<b>7,280</b>	<b>7.2%</b>	<b>313</b>	<b>296</b>	<b>4.6%</b>	<b>4.1%</b>	●
Robbery	Robbery of Business P..	127	167	31.5%	29	46	22.8%	27.5%	●
	Robbery of Personal Property	1,519	1,770	16.5%	84	77	5.5%	4.4%	●
	<b>Total</b>	<b>1,646</b>	<b>1,937</b>	<b>17.7%</b>	<b>113</b>	<b>123</b>	<b>6.9%</b>	<b>6.4%</b>	●
Robbery - Mobile Phone	<b>Total</b>	<b>362</b>	<b>500</b>	<b>38.1%</b>	<b>23</b>	<b>22</b>	<b>6.4%</b>	<b>4.4%</b>	●
Theft Person - Mobile Phone	<b>Total</b>	<b>658</b>	<b>717</b>	<b>9.0%</b>	<b>1</b>	<b>4</b>	<b>0.2%</b>	<b>0.6%</b>	●
VWI	VWI - Domestic Abuse	1,917	1,916	-0.1%	552	419	28.8%	21.9%	●
	VWI - Non Domestic A..	3,994	4,193	5.0%	723	484	18.1%	11.5%	●
	<b>Total</b>	<b>5,911</b>	<b>6,109</b>	<b>3.3%</b>	<b>1,275</b>	<b>903</b>	<b>21.6%</b>	<b>14.8%</b>	●
Domestic Abuse	<b>Total</b>	<b>6,306</b>	<b>7,084</b>	<b>12.3%</b>	<b>1,572</b>	<b>1,318</b>	<b>24.9%</b>	<b>18.6%</b>	●
Sexual Offences	Rape	624	608	-2.6%	49	12	7.9%	2.0%	●
	Other Sexual Offences	1,107	1,149	3.8%	131	101	11.8%	8.8%	●
	<b>Total</b>	<b>1,731</b>	<b>1,757</b>	<b>1.5%</b>	<b>180</b>	<b>113</b>	<b>10.4%</b>	<b>6.4%</b>	●
Total Gun Crime	<b>Total</b>	<b>154</b>	<b>148</b>	<b>-3.9%</b>	<b>28</b>	<b>46</b>	<b>18.2%</b>	<b>31.1%</b>	●
Lethal-barrelled Gun Discharges	<b>Total</b>	<b>14</b>	<b>18</b>	<b>28.6%</b>	<b>5</b>	<b>2</b>	<b>35.7%</b>	<b>11.1%</b>	●
Total Knife Crime	<b>Total</b>	<b>810</b>	<b>965</b>	<b>19.1%</b>	<b>151</b>	<b>113</b>	<b>18.6%</b>	<b>11.7%</b>	●
Knife Injury Victims (U25 Non DA)	<b>Total</b>	<b>106</b>	<b>107</b>	<b>0.9%</b>	<b>-</b>	<b>-</b>	<b>-</b>	<b>-</b>	●
Theft	Other Theft & Handling	7,482	7,736	3.4%	242	129	3.2%	1.7%	●
	Bicycle Theft	3,012	2,982	-1.0%	50	23	1.7%	0.8%	●
	Shoplifting	4,249	3,675	-13.5%	849	493	20.0%	13.4%	●
	Theft from Person	1,569	1,718	9.5%	10	10	0.6%	0.6%	●
	<b>Total</b>	<b>16,312</b>	<b>16,111</b>	<b>-1.2%</b>	<b>1,151</b>	<b>655</b>	<b>7.1%</b>	<b>4.1%</b>	●

## I & S Calls and ASB

	Previous R12	Current R12	Change %
ASB Calls	17,521	17,998	2.7%
ASB Repeat Callers	365	353	-3.3%
I Calls In Target	88.5%	81.6%	
S Calls In Target	81.2%	70.8%	



# MPS Daily Dashboard

Reporting Period Ending: 9 April  
2019

Select BCU \ Borough  
MPS



## Offences & SDs

Crime Category	Sub Category	Offences Previous R12	Offences Current R12	Offences % Change	SDs Previous R12	SDs Current R12	SD Rate - Previous R12	SD Rate - Current R12	
TNO	TNO	828,401	867,370	4.7%	108,453	80,044	13.1%	9.2%	●
	<b>Total</b>	<b>828,401</b>	<b>867,370</b>	<b>4.7%</b>	<b>108,453</b>	<b>80,044</b>	<b>13.1%</b>	<b>9.2%</b>	●
Burglary	<b>Total</b>	<b>77,806</b>	<b>81,329</b>	<b>4.5%</b>	<b>4,232</b>	<b>3,942</b>	<b>5.4%</b>	<b>4.8%</b>	●
Robbery	Robbery of Business P..	2,287	2,456	7.4%	344	351	15.0%	14.3%	●
	Robbery of Personal Property	30,634	32,190	5.1%	1,930	1,615	6.3%	5.0%	●
	<b>Total</b>	<b>32,921</b>	<b>34,646</b>	<b>5.2%</b>	<b>2,274</b>	<b>1,966</b>	<b>6.9%</b>	<b>5.7%</b>	●
Robbery - Mobile Phone	<b>Total</b>	<b>10,139</b>	<b>10,296</b>	<b>1.5%</b>	<b>634</b>	<b>580</b>	<b>6.3%</b>	<b>5.6%</b>	●
Theft Person - Mobile Phone	<b>Total</b>	<b>28,232</b>	<b>23,593</b>	<b>-16.4%</b>	<b>286</b>	<b>177</b>	<b>1.0%</b>	<b>0.8%</b>	●
VWI	VWI - Domestic Abuse	23,927	24,192	1.1%	7,043	5,583	29.4%	23.1%	●
	VWI - Non Domestic A..	53,362	53,903	1.0%	9,069	6,919	17.0%	12.8%	●
	<b>Total</b>	<b>77,289</b>	<b>78,095</b>	<b>1.0%</b>	<b>16,112</b>	<b>12,502</b>	<b>20.8%</b>	<b>16.0%</b>	●
Domestic Abuse	<b>Total</b>	<b>78,781</b>	<b>88,083</b>	<b>11.8%</b>	<b>18,567</b>	<b>15,426</b>	<b>23.6%</b>	<b>17.5%</b>	●
Sexual Offences	Rape	7,960	8,350	4.9%	554	226	7.0%	2.7%	●
	Other Sexual Offences	12,065	12,268	1.7%	1,805	1,056	15.0%	8.6%	●
	<b>Total</b>	<b>20,025</b>	<b>20,618</b>	<b>3.0%</b>	<b>2,359</b>	<b>1,282</b>	<b>11.8%</b>	<b>6.2%</b>	●
Total Gun Crime	<b>Total</b>	<b>2,542</b>	<b>2,327</b>	<b>-8.5%</b>	<b>487</b>	<b>501</b>	<b>19.2%</b>	<b>21.5%</b>	●
Lethal-barrelled Gun Discharges	<b>Total</b>	<b>409</b>	<b>381</b>	<b>-6.8%</b>	<b>57</b>	<b>75</b>	<b>13.9%</b>	<b>19.7%</b>	●
Total Knife Crime	<b>Total</b>	<b>14,763</b>	<b>14,788</b>	<b>0.2%</b>	<b>2,445</b>	<b>1,894</b>	<b>16.6%</b>	<b>12.8%</b>	●
Knife Injury Victims (U25 Non DA)	<b>Total</b>	<b>2,084</b>	<b>1,732</b>	<b>-16.9%</b>	<b>-</b>	<b>-</b>	<b>-</b>	<b>-</b>	●
Theft	Other Theft & Handling	108,898	122,932	12.9%	2,815	1,878	2.6%	1.5%	●
	Bicycle Theft	20,584	20,434	-0.7%	307	225	1.5%	1.1%	●
	Shoplifting	46,951	43,441	-7.5%	8,514	5,871	18.1%	13.5%	●
	Theft from Person	47,348	46,538	-1.7%	573	461	1.2%	1.0%	●
	<b>Total</b>	<b>223,781</b>	<b>233,345</b>	<b>4.3%</b>	<b>12,209</b>	<b>8,435</b>	<b>5.5%</b>	<b>3.6%</b>	●

## I & S Calls and ASB

	Previous R12	Current R12	Change %
ASB Calls	247,142	251,515	1.8%
ASB Repeat Callers	6,427	6,366	-0.9%
I Calls In Target	85.7%	85.8%	
S Calls In Target	79.9%	79.3%	

This page is intentionally left blank